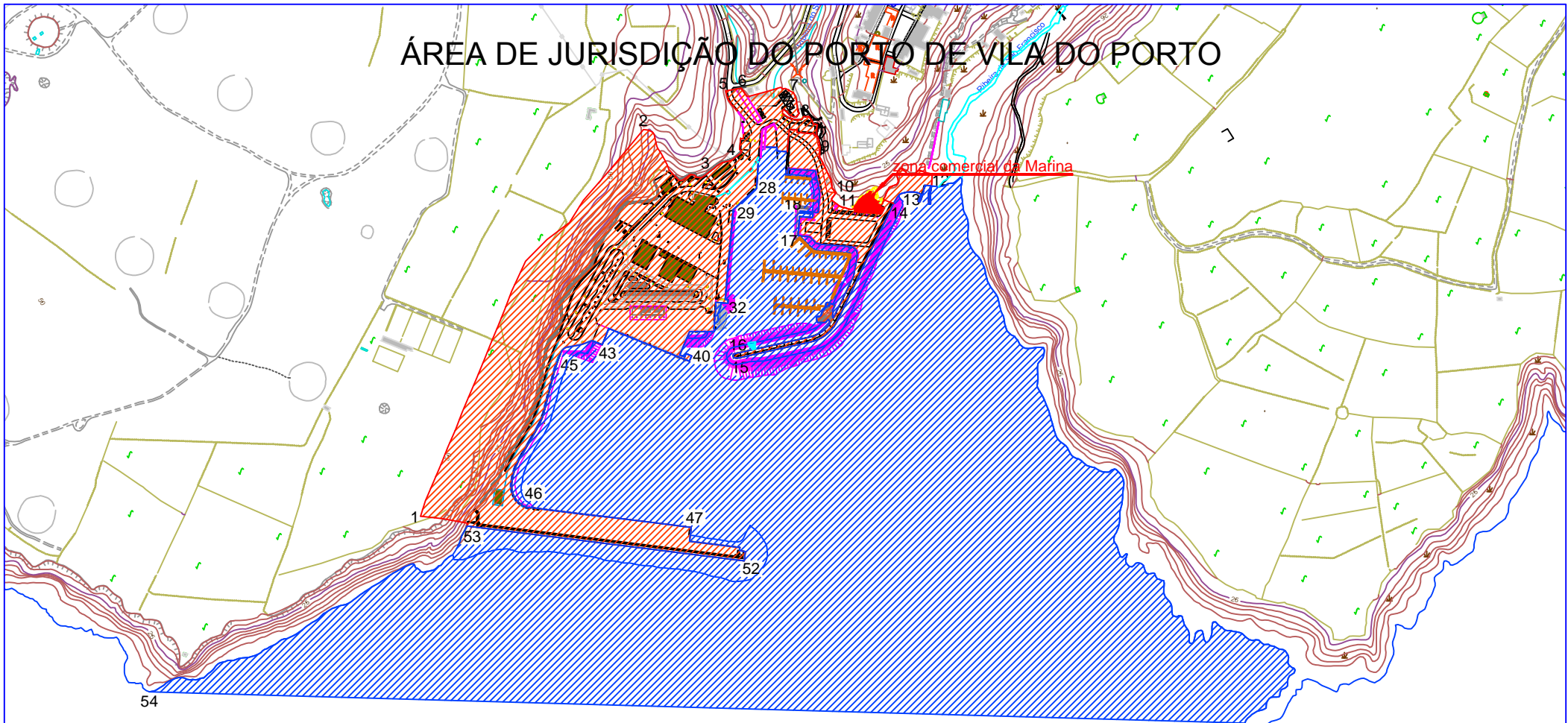





# ÁREA DE JURISDIÇÃO DO PORTO DE VILA DO PORTO



Ponta do Malmerendo

55  
Ponta do Marvão

-  ÁREA DE JURISDIÇÃO TERRESTRE
-  ÁREA DE JURISDIÇÃO MARÍTIMA

ANCORADOURO  
  
Longitude: 25° 09' 4.9"  
Latitude: 36° 56' 7.2"

(Base Cartográfica SRCTE)  
1:7500